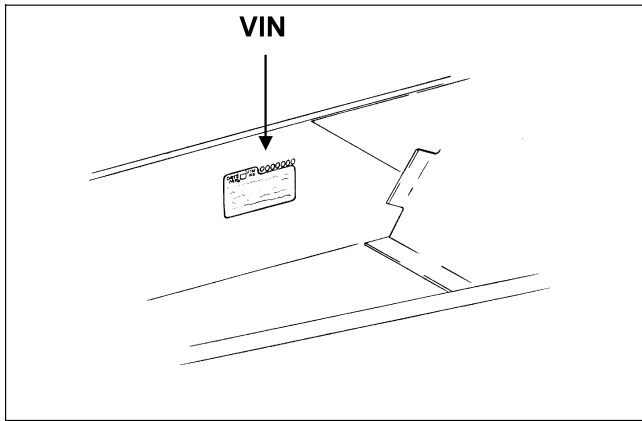


## Snowmobile Identification

The Arctic Cat Snowmobile has several identification numbers. The Vehicle Identification Number (VIN) is stamped into the tunnel near the right-side footrest (Fig. 1). The Engine Serial Number (ESN) is stamped into the crankcase of the engine. The Engine Model Number is located on the engine magneto housing.

Fig. 1-1



0726-383

These numbers are required to complete warranty claims properly. No warranty will be allowed by Arctic Cat Inc. if the engine serial number or VIN is removed or mutilated in any way.

## Recommended Gasoline and Oil

### Recommended Gasoline (Carbureted Models)

The recommended gasoline to use in these snowmobiles is 87 minimum octane regular unleaded. In many areas, oxygenates (either ethanol or MTBE) are added to the gasoline. Oxygenated gasolines containing up to 10% ethanol or up to 15% MTBE are acceptable gasolines; however, whenever using oxygenated gasolines, the carburetor main jet must be one size larger than the main jet required for regular unleaded gasoline. For example, if a 400 main jet is recommended for regular unleaded gasoline, a 410 main jet must be installed if using an oxygenated gasoline.

When using ethanol blended gasoline, it is not necessary to add a gasoline antifreeze since ethanol will prevent the accumulation of moisture in the fuel system.

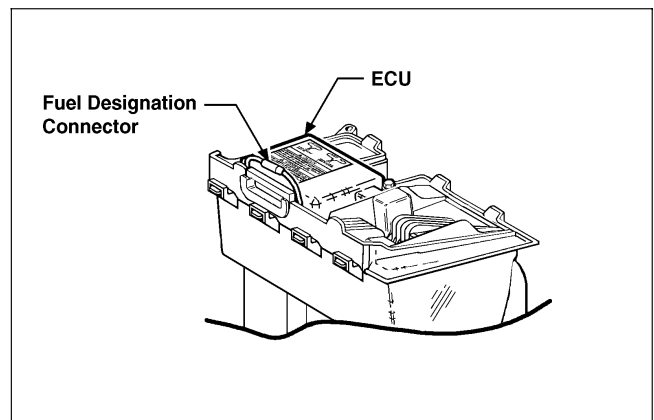
### CAUTION

Do not use white gas or gasolines containing methanol. Only Arctic Cat approved gasoline additives should be used.

### Recommended Gasoline (EFI Models)

The recommended gasoline to use in these snowmobiles is 87 minimum octane regular unleaded, and the Fuel Designation Connector at the ECU must be connected. In many areas, oxygenates (either ethanol or MTBE) are added to the gasoline. Oxygenated gasolines containing up to 10% ethanol or up to 15% MTBE are acceptable gasolines; however, if oxygenated gasoline is used, the Fuel Designation Connector at the ECU must be disconnected. Do not use gasolines containing methanol.

Fig. 1-2



734-482A

### CAUTION

Do not use white gas or gasoline containing methanol. Only Arctic Cat approved gasoline additives should be used.

### CAUTION

If oxygenated gasoline is to be used, it is extremely important that the Fuel Designation Connector at the ECU is disconnected. If the connector is not disconnected when using oxygenated gasoline, severe engine damage may occur.

■ **NOTE:** In order for the ECU to change modes, the engine must be OFF when connecting or disconnecting the Fuel Designation Connector.

### Recommended Oil

The recommended oil to use in the oil-injection system is Arctic Cat 50:1 Injection Oil. This oil is specially formulated to be used either as an injection oil or as a pre-mix oil (for carbureted model break-in) and meets all of the lubrication requirements of the Arctic Cat snowmobile engine.