

MD0094

■ **NOTE:** The open sides of the piston pin bearing washers face inward.

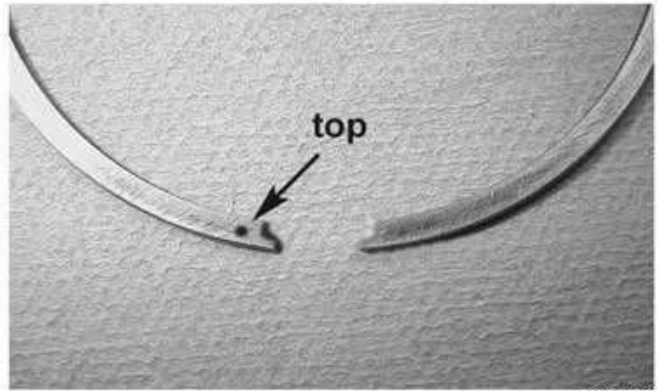


MD0251

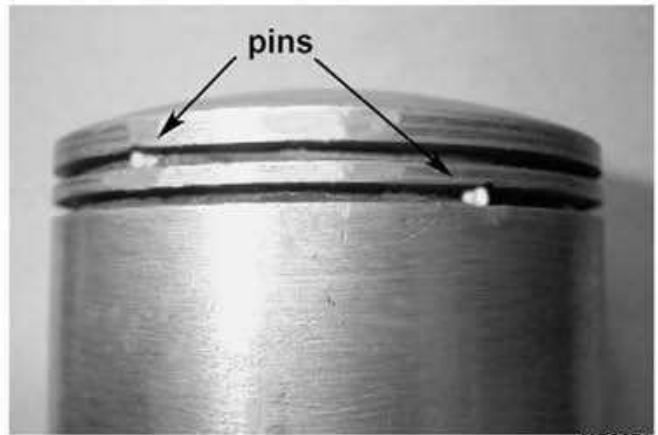


MD0208

■ **NOTE:** If the existing rings will not be replaced with new rings, note the location and top side of each ring for proper installation. When replacing with new rings, replace as a complete set only. When replacing rings note notches in ring ends which correspond with locating pins in ring grooves on intake side of the piston. This prevents the rings from turning on the piston when assembled.



MD0272

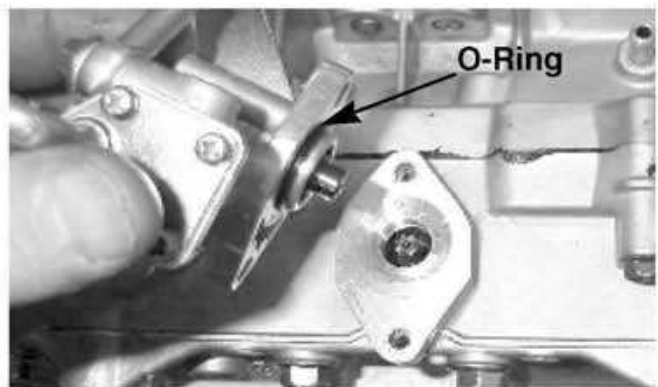


MD0271

19. Remove the two Allen-head cap screws securing the oil-injection pump; then remove the pump. Account for an O-ring.



MD0090



MD0092