

- 7 Slowly lift the ECU plate away from the printer chassis.

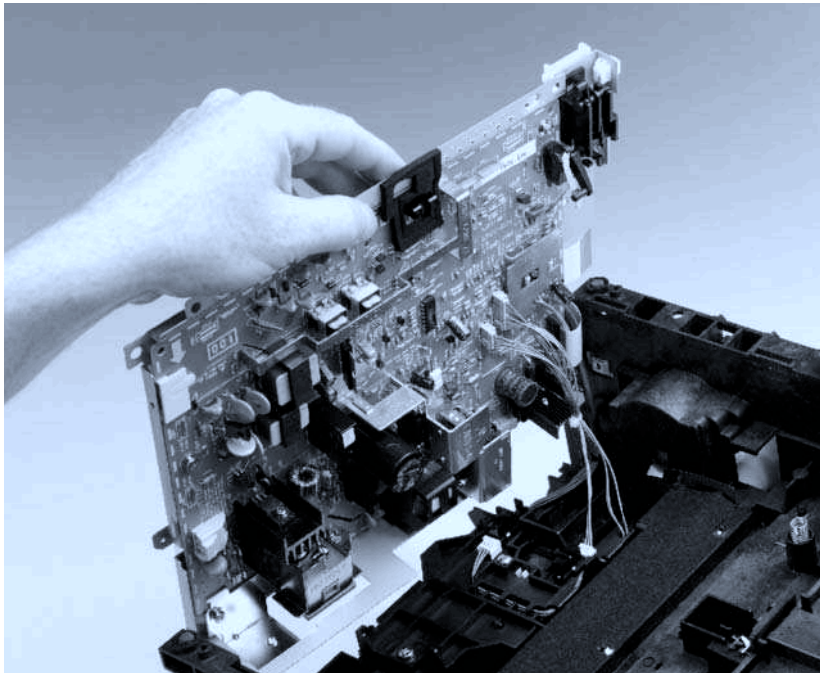
---

**CAUTION**

---

Be very careful not to damage or break the connectors underneath the ECU plate as you lift it from the printer chassis.

- 8 Reach between the plate and the chassis and unwind the cables from their cable guides until there is enough slack in the cables to allow access to the bottom of the ECU plate.
- 9 Unwind and disconnect all cables until the ECU board is separated from the chassis.



**Figure 67.** ECU pan removal (2 of 2)

---

**Note**

---

The entire ECU board can be replaced as a single unit (cables do not ship with the replacement board; if cables are damaged during removal, you will have to purchase new ones).